

# The Gift OF URBANIZED *Nature*



*e* Park  
RESIDENCES





Artist's Impression

E Park Residence is the first large-range condominium in its vicinity, designed with semi-furnished, spacious homes of 1,335 sf., which markets from RM569,800. Here, residents can get around with ease via a 5-minute journey to the Kuang KTM station, plus a short 10-minute drive to Bukit Rahman Putra. Moreover, a free shuttle service offers extra convenience throughout the day.

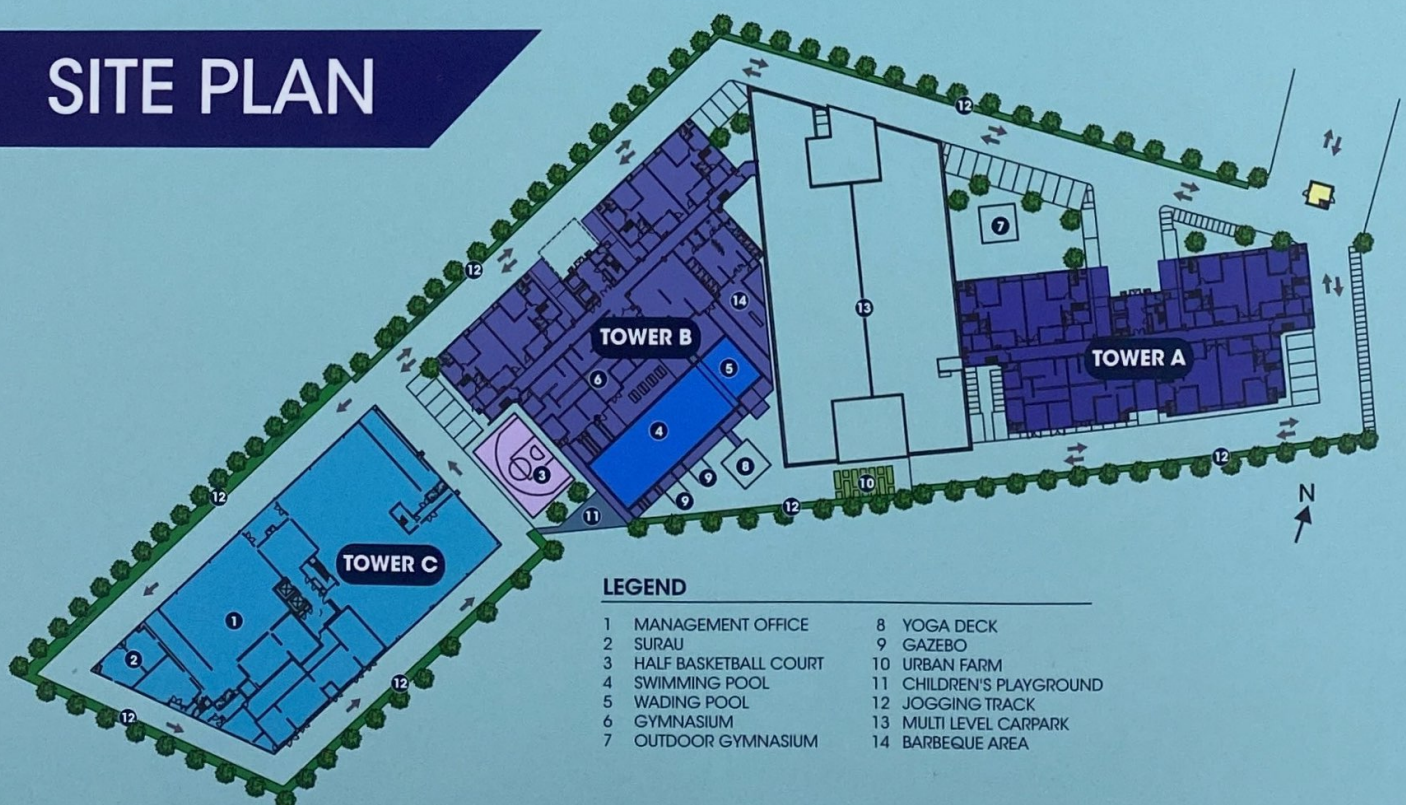
- Spacious family units: 1,335 sf – 2,659 sf
- Semi-furnished kitchen & rooms
- Only 8 units per floor
- Multi-generation lifestyle facilities
- 3-Tier security system
- 10 Minutes drive to Sungai Buloh CBD
- 5 Minutes drive to KTM station
- Proximity to E Park Farm



Artist's Impression



## SITE PLAN



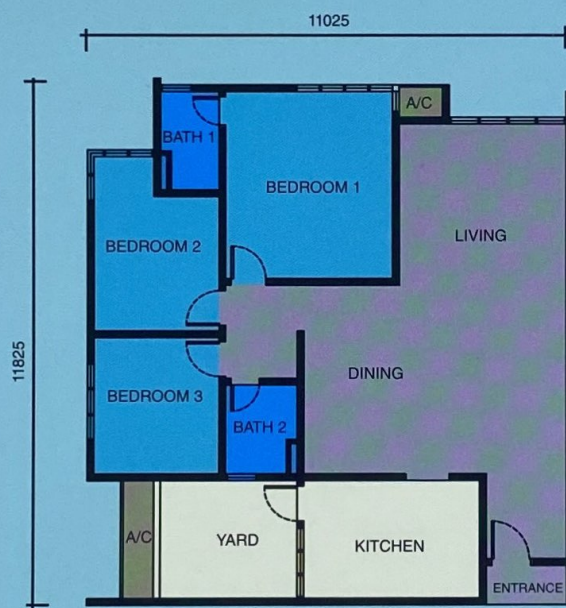


# Vibrant City Lifestyle

E Park Residences emerges as a new residential landmark in Sungai Buloh. The freehold, 3-tower condominium offers low-density living that's not only tailored to meet the demands of urban living, but also provides elements of nature in which families can flourish.

Located within the residence, the Eco Farm is a place where residents may plant and enjoy organic produce. This is a great avenue for anyone to begin a healthy lifestyle.

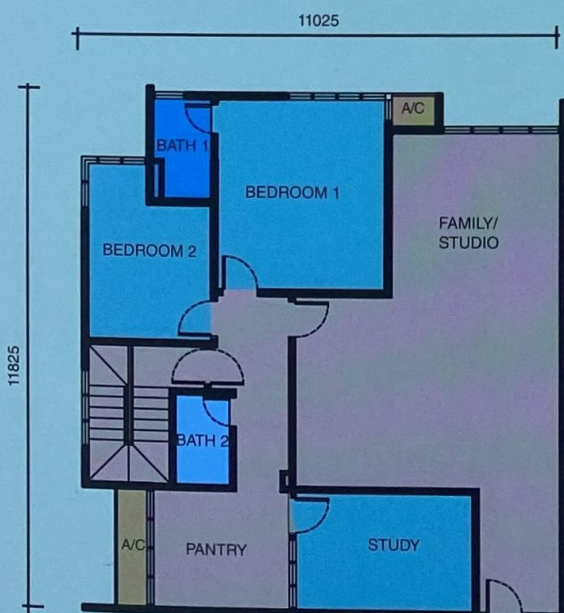
## FLOOR PLAN



### TYPE A

BUILD-UP AREA:  
1,335 sq. ft.

3 BEDROOMS + 2 BATHROOMS



UPPER FLOOR



LOWER FLOOR

### TYPE E (DUPLEX)

Build-up area:  
2,648 sq. ft.

4 BEDROOMS + 3 BATHROOMS  
1 STUDY ROOM  
1 UTILITY



# LOCATION MAP

